

SmartLine 2M Exercise

Metric Measure

Level 1 Module 11



For more exercises, go to <http://www.micro-press.com/Resources.html>

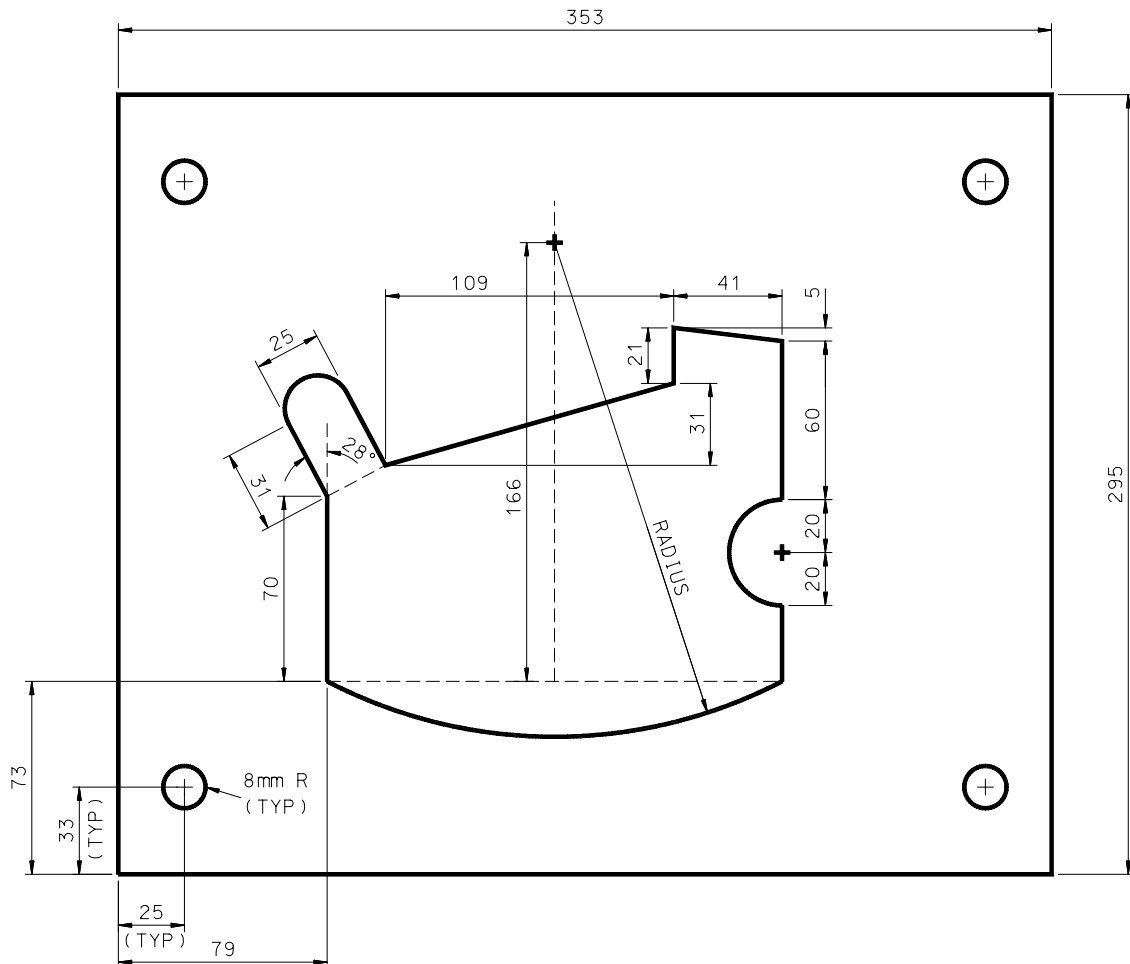
If you intend to use this copyright document for teaching or commercial purposes, please attribute the source and add a live link to our site.

This exercise is best done after completing Module 11 of our MicroStation 2D Level 1 Training Manual.

The drawing below shows the layout for a stamped plate. Do the following:

- Open a new file called: STAMP
- Set Working Units to: mm, mm, so that you can work in millimeter units.
- Make any other settings you think necessary.
- Draw the plate to the dimensions shown.

After drawing the plate, start at the bottom-left corner to draw the central stamped shape. Working clockwise, you should be able to draw a continuous SmartLine as far as the bottom-right corner. The final large arc can be drawn as part of the continuous SmartLine but requires clever use of Accudraw, tentative points, and Accudraw's calculator. If you find this too difficult, stop the SmartLine at this point and draw a separate SmartLine arc using the dashed lines as a reference.



Stamped Plate Layout